



# 5000 SERIES

## DESCRIPTION

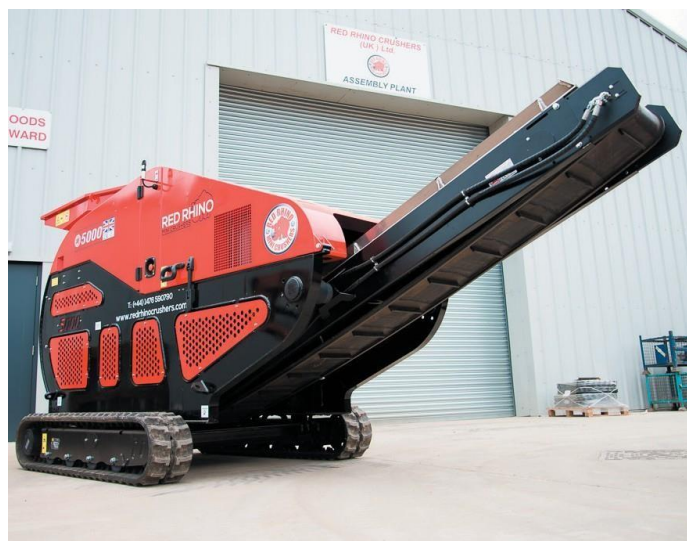
The 5000 series is a 500mm x 250 mm jaw action crusher.

Instant hydraulic adjustable jaws allow output product sizes to range from 20mm up to 100mm. Being only 1663mm wide, the 5000 series can enter sites where access and space are restricted. Dust suppression is fitted as standard, by means of fine water spray nozzles utilising standard domestic hose pressure.

This crusher is very popular with civil engineering companies wanting to crush onsite, or skip companies looking to reduce their liabilities to landfill. The 5000 series makes light work of reinforced concrete, brick, porcelain and other aggregate type products. Crushing with the 5000 series can save thousands of pounds on muck away and bought in backfill. It is easily transported from site to site using a plant trailer and can be up and crushing within 5 minutes of arrival.

Using the wireless remote-control system crushing with a 5000 series can be a one-man operation. The 5000 series cannot be

matched for its reliability and performance by any other product on the market.



## STANDARD FEATURES

- Jaw aperture of 500mm x 250mm
- Average product size 20mm to 100mm
- Additional product sizes on request
- Kubota 25HP 4 Cylinder water cooled diesel engine, complies with EPA Tier 4 emissions
- Fuel consumption is approximately 5 litres per hour
- Output can be up to 15tonnes – 20tonnes per hour (dependent on material size and operating conditions)
- Wireless remote control system for all functions
- Excavator loaded
- CE marked

## DIMENSIONS

- Length: 5000mm
- Width: 1663mm
- Loading Height: 2755mm
- Weight: 2700kg

